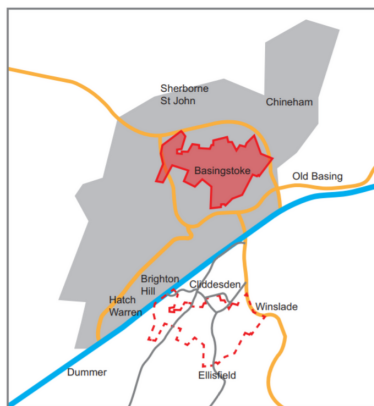




Friends - your countryside needs you!

You may be aware that Portsmouth Estates have submitted a speculative concept document for "Upper Swallick Garden Village" which would consist of 2,500 or more houses in the fields surrounding Cliddesden. This area is the "Lungs" of Basingstoke. If it went ahead, stunning countryside would be built over, traffic levels on the A339, through Brighton Hill, Hatch Warren, Cliddesden and the Candovers would rise to even more unacceptable heights and local historic villages would be swallowed up.

This development would be the size of central Basingstoke.



Would you like to **Stand Up for the North Hampshire Downs?**

Please see overleaf to find out how you can help

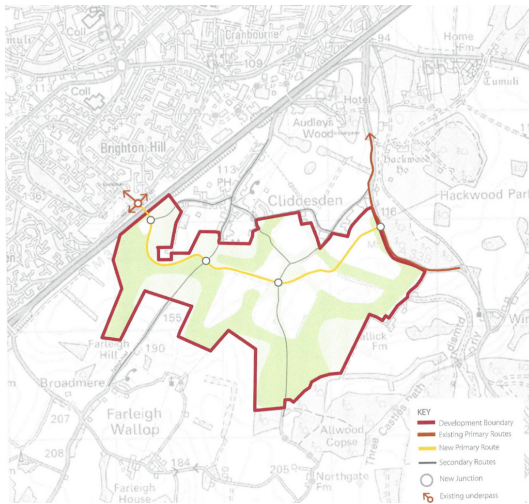
We need to act.

If you object to the concept:

Then please:

- Write to your local councillor and MP to show that you object
- Like the Stand Up for the North Hampshire Downs page on Facebook and share
- Volunteer to help however you can
- Sign the petition on the STaNHd website
- Spread the word!

Thank you.



www.stanhhd.com

STaNHd Facebook page:

www.facebook.com/Standupfornorthhampshiredowns



Stand Up for the North Hampshire Downs